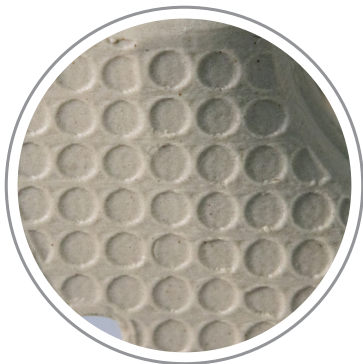


# RANDOM PACKING MaxiSaddle BPC



New  
design



Higher  
efficiency



Maintaining  
pressure drop



Higher mechanical  
resistance



## About the new design

Through interdisciplinary expertise in markets and products, we developed the **new MaxiSaddle BPC** ceramic saddle packing with an optimized design. Its increased contact area **enhances efficiency**, while the improved geometry ensures **higher mechanical resistance— with no pressure drop increase**, if compared to the previous BPC geometry

Its highly effective area and the low resistance it imposes on gaseous flow minimize pressure drop and enhance the packed bed in terms of capacity and efficiency. Its special composition has excellent mechanical and chemical properties, increasing MaxiSaddle BPC lifespan to more than a decade, depending on operation.

MaxiSaddle® BPC saddles are manufactured by Clark Solutions in Brazil with the highest quality controls in terms of composition, mechanical resistance and dimensional compliance, guaranteeing the specified performance throughout the material's lifespan.



Designed for high **capacity and efficiency**

Excellent **mechanical properties**

Highly resistant to **acid systems**

Properties		MaxiSaddle® BPC
Pieces by Volume	[Pieces / m <sup>3</sup> ]	1150
Weight per Volume	[Kg / m <sup>3</sup> ]	510
Ceramic density	[Kg / m <sup>3</sup> ]	2350
Specific Area	[m <sup>2</sup> / m <sup>3</sup> ]	66
Fraction of Empties	[%]	77,5%
Solubility in Water (ASTM C515 and C373)	[%]	< 0,5%
Resistance to Sulphuric Acid (ASTM C515 and C279)	[%]	< 1,0%

Material	SiO <sub>2</sub>	Al <sub>2</sub> O <sub>3</sub>	Fe <sub>2</sub> O <sub>3</sub>	CaO	Na <sub>2</sub> O	K <sub>2</sub> O	MgO
Composition	62-72	20-30	<2,0	< 1,8	< 1,5	< 6,0	< 1,0